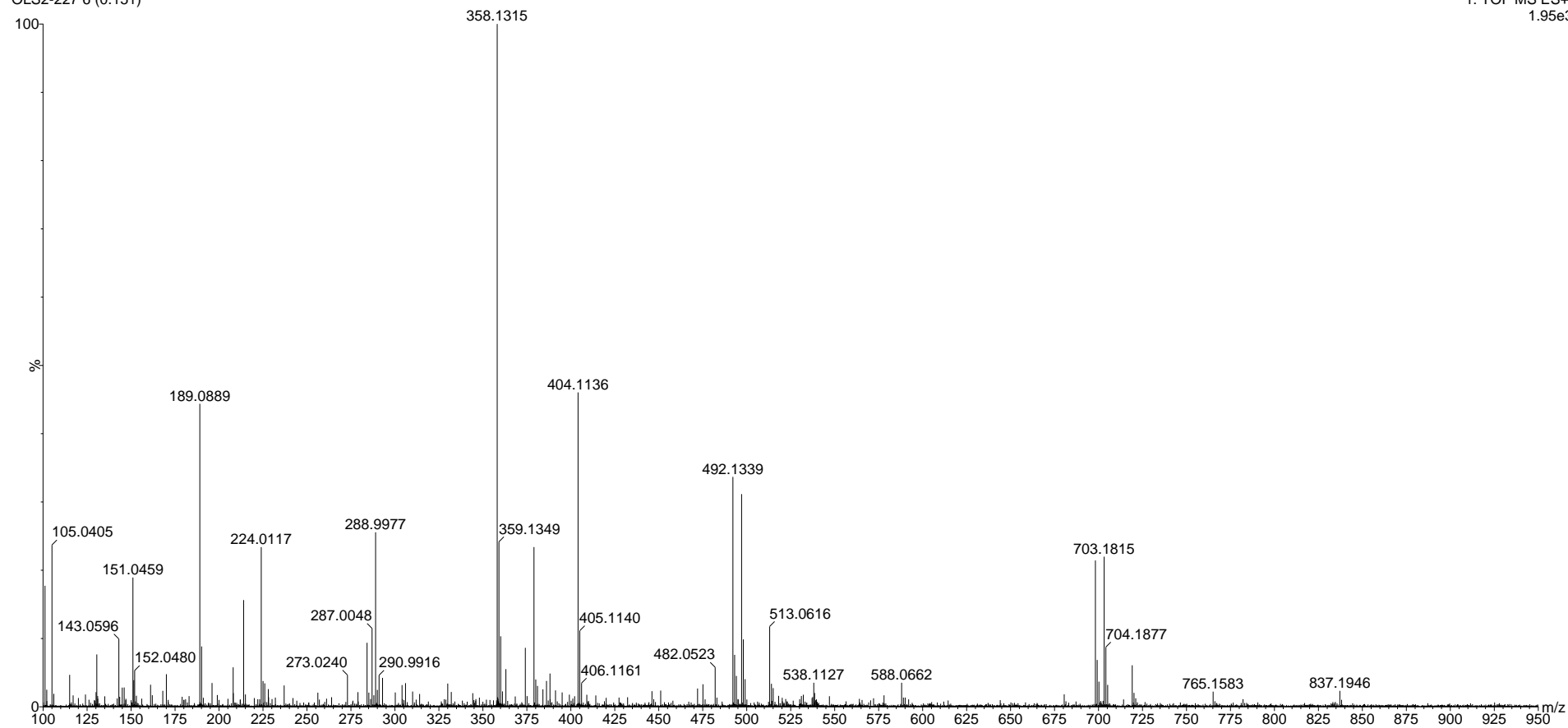


OLS2-227
OLS2-227 6 (0.151)

05-Mar-2024
1: TOF MS ES+
1.95e3



Elemental Composition Report for [M+H]⁺: 341.1059

Elemental Composition Report for 358m/z

Single Mass Analysis

Tolerance = 5.0 PPM / DBE: min = -1.5, max = 100.0

Element prediction: Off

Number of isotope peaks used for i-FIT = 3

Monoisotopic Mass, Even Electron Ions

84 formula(e) evaluated with 1 results within limits (all results (up to 1000) for each mass)

Elements Used:

C: 1-30 H: 0-60 N: 0-1 O: 0-10 S: 1-1

Minimum: -1.5

Maximum: 5.0 5.0 100.0

Mass	Calc. Mass	mDa	PPM	DBE	i-FIT	i-FIT (Norm)	Formula
358.1315	358.1324	-0.9	-2.5	5.5	119.2	0.0	C16 H24 N O6 S [M+NH4]+